



Product Activation Guide

Read before starting up the printer for the first time

Rev	ACTE-V-08
-----	-----------

General Table of Contents

1. Introduction	1-1
1.1. Checking your use environment.....	1-1
2. Printer activation from your computer.....	2-1
2.1. Complete User Registration	2-2
2.2. Connect printer to your computer	2-3
2.3. Install MSM into your computer	2-7
2.4. Set up MSM	2-7
2.5. Register the printer and perform activation.	2-8
2.6. Reboot a printer.	2-11
3. Printer activation from the printer	3-1
3.1. Enter the code into the printer.	3-1
3.2. Reboot a printer	3-2
4. VJ-628/628X/628MP/XPJ-C641SR-P	4-1
5. VJ-404GT / 405GT.....	5-1
5.1. Enter activation code.....	5-1
5.2. Execute activation	5-3
6. XPJ-1682SR/1641SR/1682WR/1642WR/1641SR-P/461UF/661UF/1682UR	6-1
6.1. Enter the code into the printer.	6-1
6.2. Reboot a printer	6-2

1. Introduction


Before activating your printer, check your use environment first and follow the appropriate procedures.

NOTE


- If you failed to activate the printer with this procedure, please contact your dealer.
-

1.1. Checking your use environment

1. Connecting the printer to a computer connected to the Internet

 See "2. Printer activation from your computer".

2. Connecting the printer to a computer not connected to the Internet


 See "2. Printer activation from your computer".

3. If the printer cannot be connected to a computer

 See "3. Printer activation from the printer".


4. When using following printer models

- VJ-628
- VJ-628X
- VJ-628MP
- XPJ-C641SR-P

 See "4. VJ-628/628X/628MP/XPJ-C641SR-P".

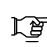
5. When using following printer models

- VJ-404GT
- VJ-405GT

 See "5. VJ-404GT / 405GT".

6. When using following printer models

- XPJ-1682SR/1641SR/1682WR/1642WR/1641SR-P
- XPJ-461UF/661UF/1682UR

 See "6.XPJ-1682SR/1641SR/1682WR/1642WR/1641SR-P/461UF/661UF/1682UR".

2. Printer activation from your computer

Read the following Required Environment first and follow the work flow steps to activate your printer.

(1) Required Environment

- Either Windows 7, Windows 8/8.1 or Windows 10 must be installed.
When the above OS support ends, the operation on MSM cannot be ensured.
- The user must log on with administrator rights.

(2) Work Flow

2-1. User Registration.

2-2. Connect printer to your computer.

2-3. Install MUTOH Status Monitor(MSM) into your computer.

2-4. Set up MSM

2-5. Register the printer and perform activation.

2-6. Reboot a printer.

2.1. Complete User Registration

In order to perform the activation over the Internet, you need to access to the dedicated website "MUTOH Club" and complete the user registration.

NOTE

- This process requires the Internet connection.
- If you are not using the computer with internet access, skip this process and move to the next step.

Please start the process from the step 2-2.

📖 「2.2. Connect printer to your computer」

- For user registration, it is recommended to use the same computer used in the next step "2.2. Connect printer to your computer". If you use the computer that cannot be connected to the printer, follow the appropriate notes described in this document.

Access to the MUTOH Club from the following URL and complete user registration.

URL : <https://club.mutoh.co.jp/mutoh/guser>

MUTOH English

E-mail address or login ID:


Login Password:


Forgot your password?


Login Register

News

Service

 MUTOH Club
[MUTOH Club TOP](#)

 MSM
MUTOH Status Monitor
[And MUTOH Club is](#)


 VSM Mobile
[MUTOH Status Monitor](#)

▲ Top of page
[VSM Mobile](#)

(C)Mutoh Industries Ltd. 2010-2019

2.2. Connect printer to your computer

1. Install the printer.

 “Installation manual”

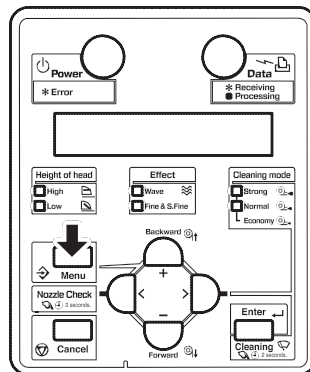
2. Turn printer power on and set the IP address.

NOTE

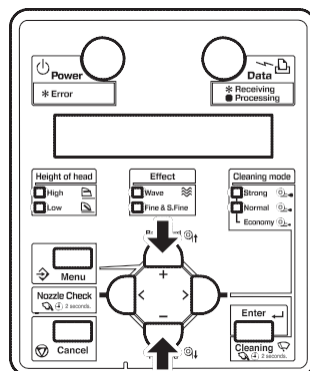
- When connecting the printer to the network, there should be no IP address overlap between the printer and other network devices. Consult with your network administrator for available IP addresses.
- The default IP address of the printer is “192.168.1.253”.
- The layout of the operation panel varies depending on the printers.

2-1 Turn on the printer. “Activation required” is displayed on the operation panel.

2-2 Press the [Menu] key on the operation panel. The setup menu will appear.

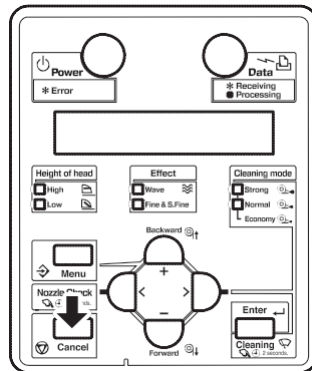


2-3 Use the [+] and [-] keys on the operation panel to display “Set **: IP Address”.



2-4 Press the [Enter] key on the operation panel to enable modification of the settings.

- The default IP address "192.168.1.253" is displayed on the operation panel.
- To go back to the previous menu, press the [Cancel] key.



2-5 Use the [+] or [-] keys to change the settings.

2-6 Use the [Enter] key to save the new IP address.

3. Also set "Set**: Subnet Mask" and "Set**: Gateway".

NOTE

- Be sure to consult with your network administrator before setting the subnet mask and gateway.

4. Turn on the computer and set the IP address.

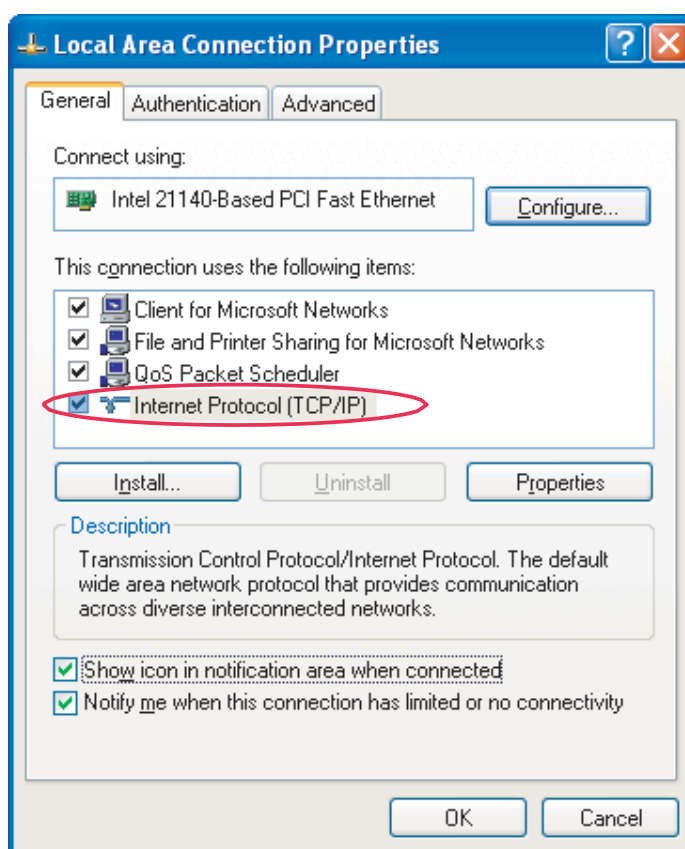
NOTE

- If your computer is already connected to the network and the network settings have been already complete, skip this step.
- The following explanation describes how to set up Windows XP by retaining the printer default IP address “192.168.1.253” and the default subnet mask “255.255.255.0”.

4-1 From [Control Panel], open [Network Connections].

4-2 Right-click [Local Area Connection] and select [Properties].

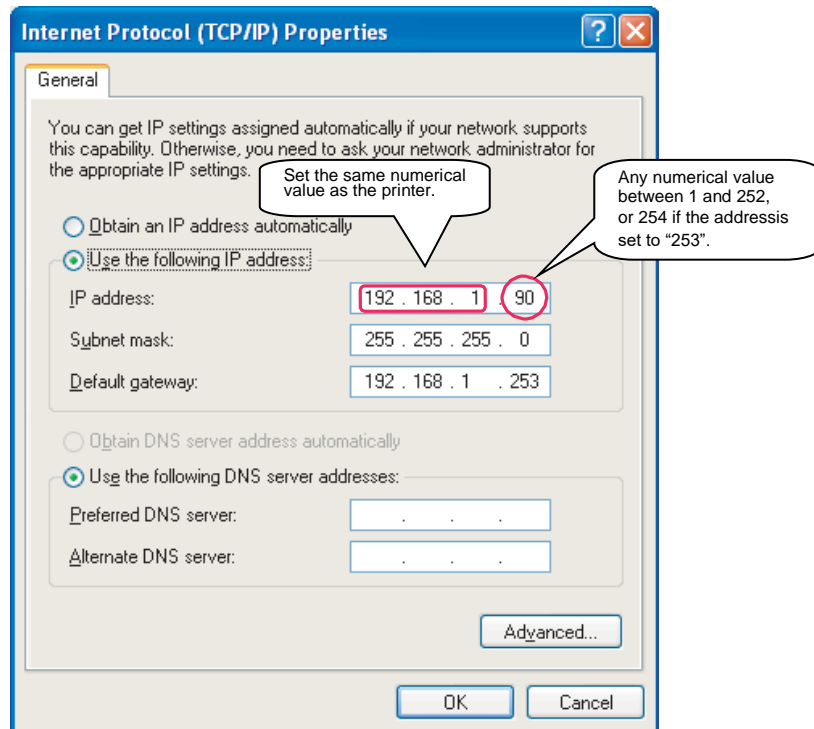
4-3 Double-click [Internet Protocol (TCP/IP)].



4-4 If the printer IP address is "192.168.1.253", enter any value from "192.168.1.1" to "192.168.1.252" or "192.168.1.254" in [IP address] field.

NOTE

- When the printer IP address has been changed from the default value, specify the computer IP address field by entering the same values as those of the printer IP address up to the third dotted octet (third comma) and a different value for only the last dotted octet.



4-5 Click [OK] to complete the IP address setting.

- Plug in the network interface cable to the network interface connector on the back of the printer.

 "2.2.2 Rear section" in "Operation Manual"

NOTE

- If possible, it is recommended to use a computer with internet access.
- When connecting the printer to the computer directly, use a "crossover cable". When connecting the printer to the computer through a hub, use a "patch cable".

- Plug the opposite end of the network interface cable as follows:

- When using a crossover cable: plug in to the computer.
- When using a patch cable: plug in to the connection point for devices in the network such as hub, router switch, etc.

2.3. Install MSM into your computer

Follow the steps below to install MSM into your computer, connected to the printer.

NOTE

- Download the MSM from the download site in MUTOH Club. If you cannot use the computer with internet access, please contact your dealer.
- If MSM is already installed, move to 2.4 Set up MSM.
- For the installation procedure of MSM, see the MSM Operation Manual (2.1 Installation).

2.4. Set up MSM

After the installation of MSM, start MSM and set up initial settings.

NOTE

- If the initial setting has been already done, move to 2.5. Register printer and perform activation.
- For the MSM initial setting procedure, see the MSM Operation Manual (3. Initial Setting).
- In this initial setting, make sure to check [MUTOH Club Service] and log in to MUTOH Club.

2.5. Register the printer and perform activation.

NOTE

To register a printer, make sure

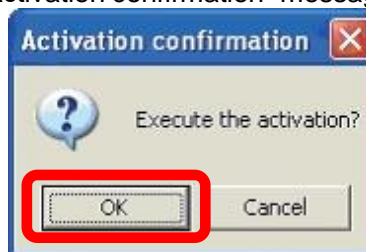
- The printer is powered on.
- The printer and your computer are connected over the network.

1. Register the printer.

NOTE

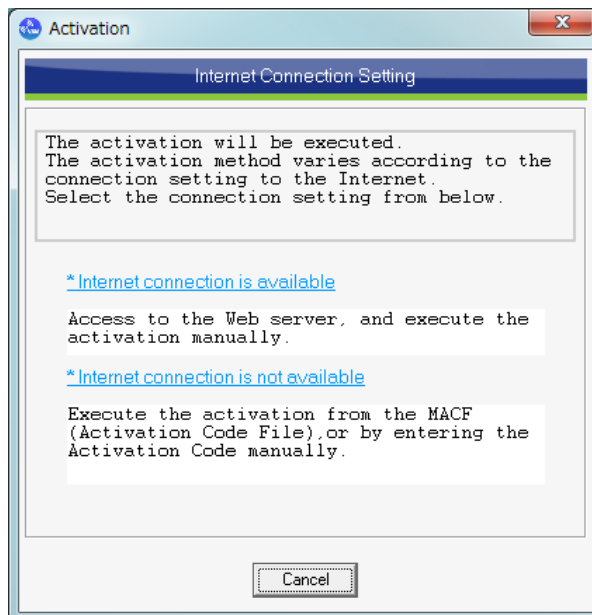
- For the printer registration details, see the MSM Operation Manual (3.9 Printer Registration).

2. Click "OK" button on the "Activation confirmation" message.



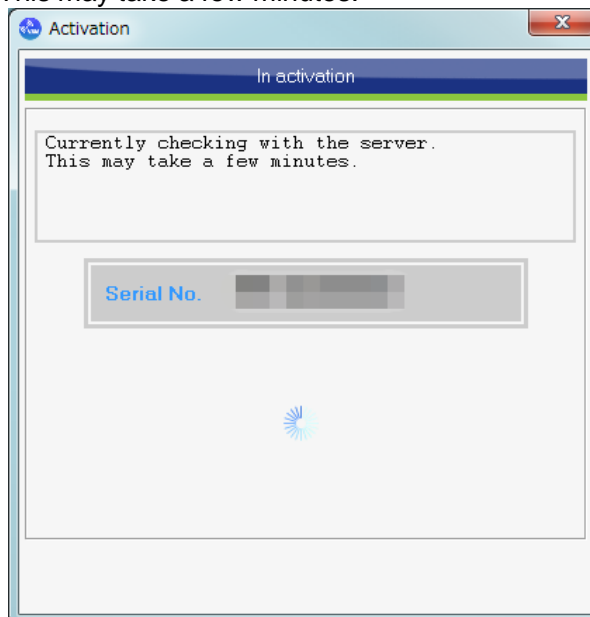
3. From the Connection environment tab displayed in the Activation window, select whether internet connection is available in the current configuration or not.

- If yes, select "Internet connection available".
☞ See "3-a Internet connection is available" and follow the procedure.
- If not, select "Internet connection is not available".
☞ See "3-b Internet connection is not available" and follow the procedure.

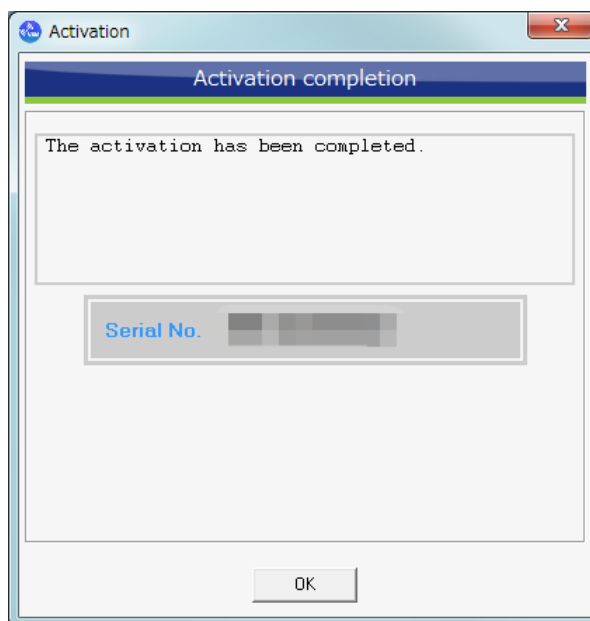


(3-a) Internet connection is available

1. The Activation window will change to the Releasing Activation Code window.
 - Printer activation is automatically performed by accessing MUTOH Club to obtain an "Activation Code". This may take a few minutes.



2. After successful activation, the Activation window changes to the Activation completion window.
 - Click [OK] to complete the operation.



NOTE

- If activation fails, the error code will be displayed. Please inform your dealer and provide the error code (Err Code).
-

(3-b) Internet connection is not available

If MSM cannot connect to the Internet, obtain an Activation Code or Activation Code File to manually perform activation.

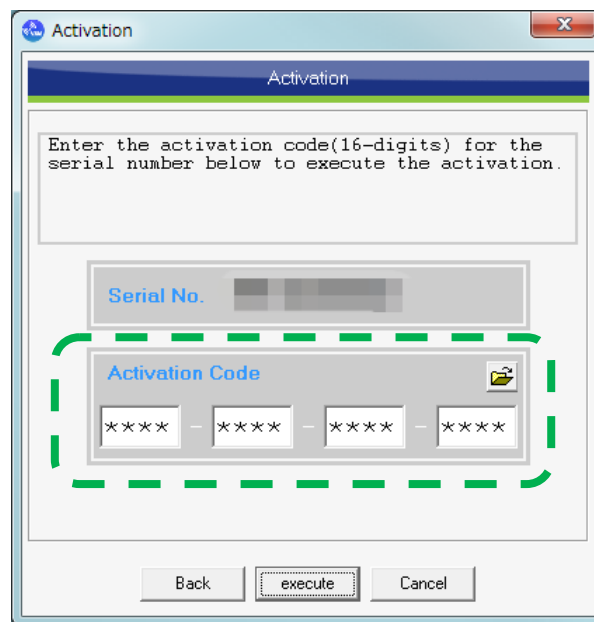
NOTE

- Please contact your dealer to obtain an activation code or activation code file.
-

Follow the procedure below to manually perform activation on MSM.

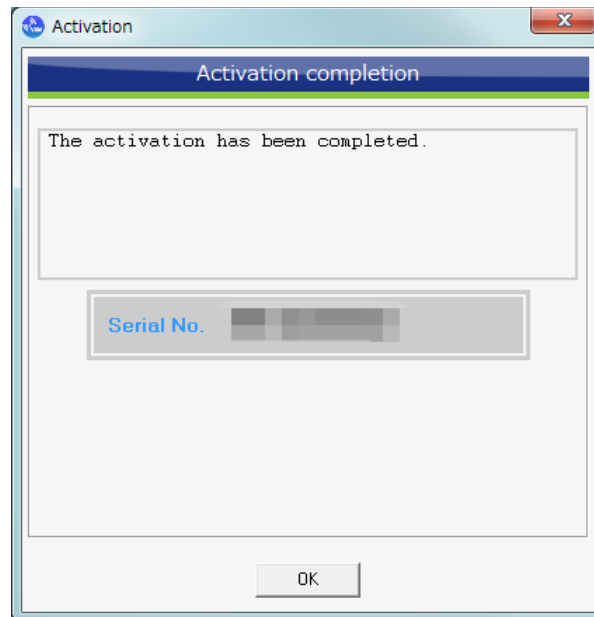
1. Enter the printer's serial number on the Activation window, select either of the following two options, and then click the "execute" button.

- Select an Activation Code File.
- Enter a 16-digit Activation Code.



2. When activation is properly completed, the Activation completion window will be displayed.

- Click [OK] to complete the operation.



NOTE

- If the activation fails, the error code will be displayed. Please inform your dealer and provide the error code (Err Code).
 - When the activation is complete, restart the printer.
-

2.6. Reboot a printer.

Perform the following procedure:

1. When the activation is complete, "Reboot a Printer" will be displayed on the operation panel.
Turn off the printer.
2. Restart the printer.

3. Printer activation from the printer

If the printer cannot be connected to a computer, you can activate the printer from the printer operation panel with the following steps.

(1) Work Flow

- 3-1. Enter activation code from the operation panel.
- 3-2. Reboot the printer.

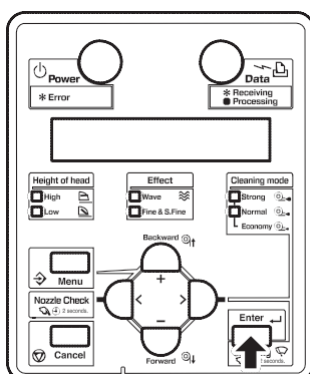
3.1. Enter the code into the printer.

If the printer cannot be connected to a computer, obtain an Activation Code to manually perform activation.

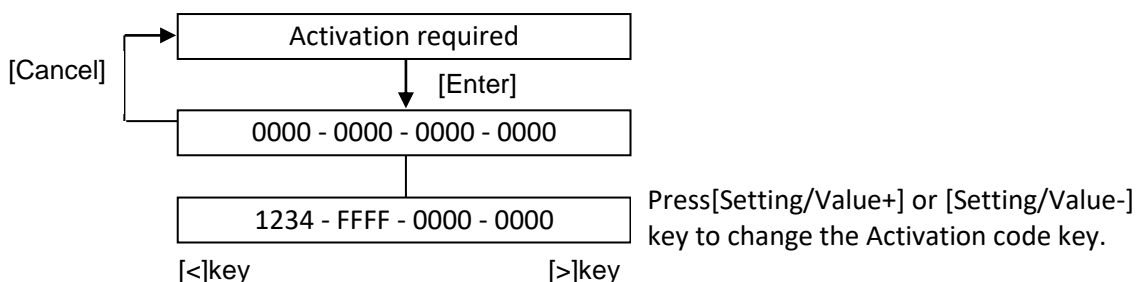
NOTE

- Please contact your dealer and obtain an activation code or activation code file.

1. Turn on the printer. "Activation required" will be displayed on the operation panel.
2. Press the [Enter] key on the operation panel.
 - "0000-0000-0000-0000" will be displayed on the panel to be able to enter an activation code.



3. Use the [+] and [-] keys to change the value in the ranges "0-9 and A-F". Use the [>] and [<] keys to change the input position.



4. After entering the code, press the [Enter] key to execute the activation.
 - When activation is complete, "Reboot a Printer" will be displayed on the operation panel.
 - If the wrong code was entered, "Err! Reboot a Printer" will be displayed on the operation panel. Restart the printer and perform activation again.

3.2. Reboot a printer

1. When the activation is successfully complete, "Reboot a Printer" is displayed on the operation panel. Turn off the printer.
2. Restart the printer.

4. VJ-628/628X/628MP/XPJ-C641SR-P

These printer models come with the all-in-one installer CD. Start the installer and follow the set-up wizard to activate the printer.

NOTE

- For details, check the wizard instruction.
-

5. VJ-404GT / 405GT

You can activate VJ-404GT/405GT from the printer touch-screen panel. Follow the work flow steps below.

(1) Work Flow

5.1. Enter activation code

5.2. Execute activation

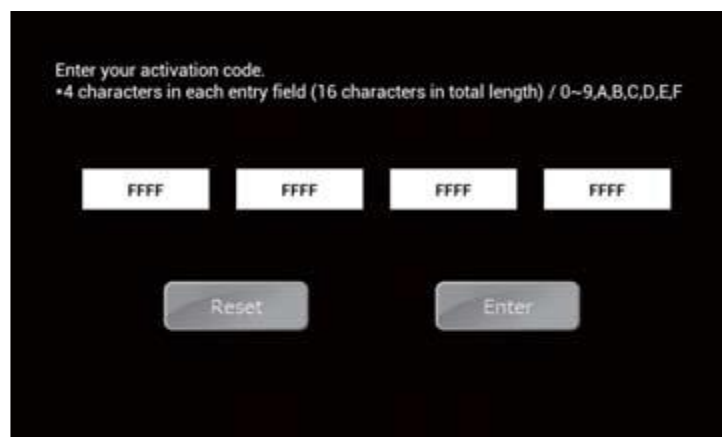
5.1. Enter activation code

Obtain the activation code and enter the code with steps below.

NOTE

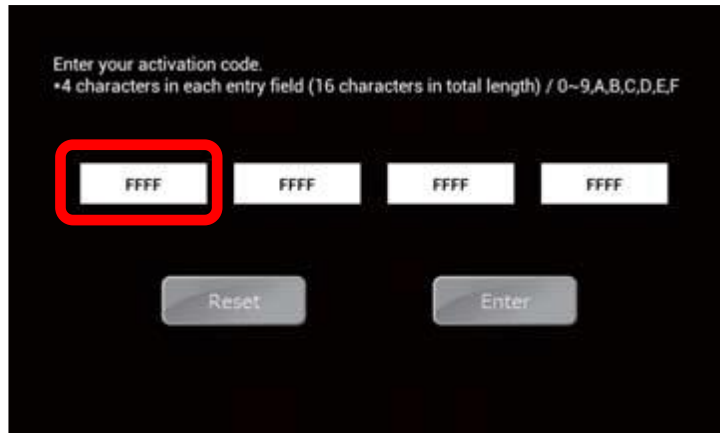
- Please contact your dealer and obtain the activation code.
-

1. Turn on the printer. The following menu appears on the panel.



2. Click the left-most area of the input areas displaying [FFFF].

- The code input boxes are displayed.



NOTE

- Input the 16-digit activation code in 4-digit sections.

3. Use the numerical keyboard to input the activation code.

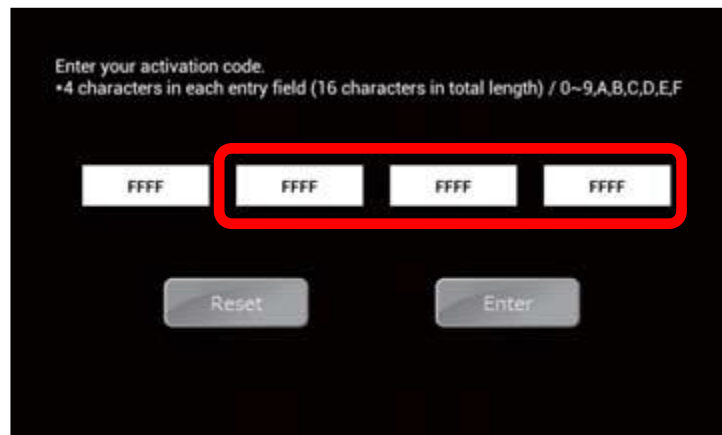
- Input the first 4 digits of the activation code.
- Tap [Done] to confirm the entry.



NOTE

- Press the touch panel firmly. If you touch it lightly, it may not respond as it is pressure-sensitive.
- To switch between letters and numbers, tap the key on the bottom left.

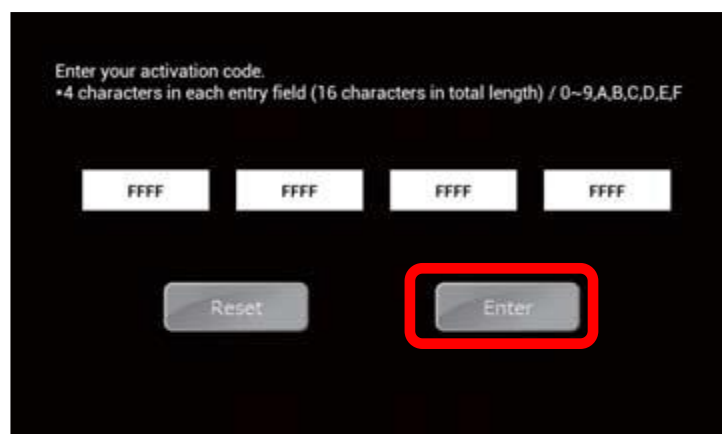
4. Input the 5th to 16th digit code to the rest of input boxes.



5.2. Execute activation

1. Press [Enter].

- The printer will be activated with the code you entered.



NOTE

- When you need to input the activation code again, tap [Reset].
 - When activation is complete, the printer will start the table initialization. Do not touch the table while the initialization.
-

6. XPJ-1682SR/1641SR/1682WR/1642WR/1641SR-P/461UF/661UF/1682UR

If the printer cannot be connected to a computer, you can activate the printer from the printer operation panel with the following steps.

(1) Work Flow

3-1. Enter activation code from the operation panel.

3-2. Reboot the printer.

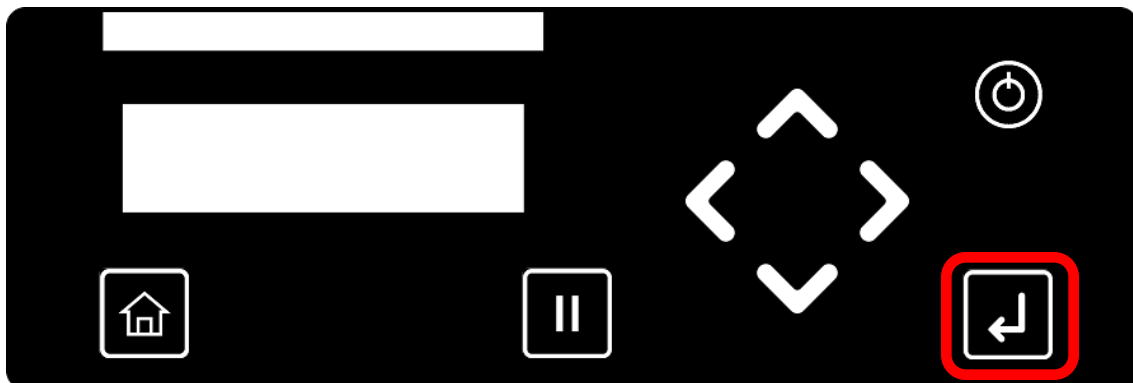
6.1. Enter the code into the printer.

If the printer cannot be connected to a computer, obtain an Activation Code to manually perform activation.

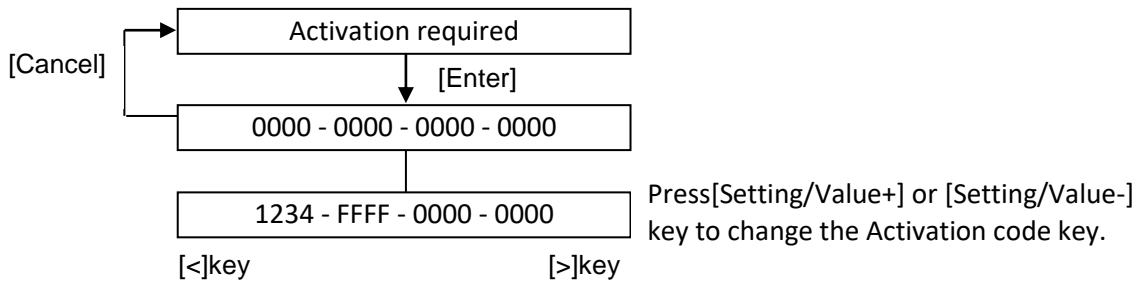
NOTE

- Please contact your dealer and obtain an activation code or activation code file.
-

1. Turn on the printer. "Activation required" will be displayed on the operation panel.
2. Press the [Enter] key on the operation panel.
 - "0000-0000-0000-0000" will be displayed on the panel to be able to enter an activation code.



3. Use the [^] and [v] keys to change the value in the ranges "0-9 and A-F". Use the [>] and [<] keys to change the input position.



4. After entering the code, press the [Enter] key to execute the activation.
 - When activation is complete, "Reboot a Printer" will be displayed on the operation panel.
 - If the wrong code was entered, "Err! Reboot a Printer" will be displayed on the operation panel. Restart the printer and perform activation again.

6.2. Reboot a printer

1. When the activation is successfully complete, "Reboot a Printer" is displayed on the operation panel. Turn off the printer.
2. Restart the printer.

MUTOH